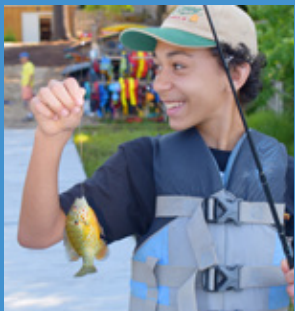
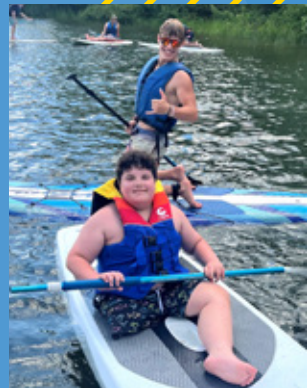




2024 Impact Report



where families
find family



Letter from the Founder

In 2024, we celebrated 40 years of Camp Sunshine. Throughout the year, I found myself reflecting on the extraordinary journey that brought us to this milestone. What was intended to be a one-time program in June 1984 has grown into a community of joy, resilience, and unwavering support for families facing unimaginable challenges. It is truly remarkable to witness the impact Camp Sunshine has had over the past four decades, and it is with immense gratitude that I share this year's Impact Report with you.

Since our inception, Camp Sunshine has welcomed more than 60,000 family members to our year-round campus in Casco, Maine. Camp Sunshine provides families with a haven of hope and joy. From the laughter that echoes across Sebago Lake, to the friendships that are created here that will stand the test of time, it is unquestionable that Camp Sunshine is more than just a retreat. As our new tagline states: It is where families find family.

Each name, story, and milestone noted in these pages is a testament to the collective effort of everyone

who believes in the power of Camp Sunshine. I would also be remiss if I did not mention the founding members of Camp Sunshine. These individuals are no longer with us but their impact will be felt for years to come.

Thank you for being a part of our story. Whether you are a donor, volunteer, staff member, or a Camp family who has found comfort within our community, you are an integral piece of this journey. Together, we will continue to bring light to those who need it most.

With gratitude,

Anna Gould

Anna Gould

Founder & Board Chair

In Memoriam

Lawrence Gould, PhD,
Co-Founder of Camp Sunshine

David Frohnmayer, Esq.

Martin Grossman

David Hancock

Joseph Pappalardo

Tim Porta

Albert Ragucci

Erna Viterbi





Letter from the President & CEO



As we reflect on another incredible year, I am filled with gratitude for the unwavering support of our Camp Sunshine community. Your generosity, dedication, and belief in our mission continue to make a profound difference in the lives of the children and families we serve.

Throughout 2024, Camp Sunshine honored our Founders, Anna M. Gould (Board Chair) and the late Dr. Lawrence Gould. So many members of our community joined us in honoring Anna and Larry for their vision, guidance and generosity – and I would like to take this opportunity to say thank you again.

In this year's Impact Report, you will read about some of the milestones we achieved together. From expanding our programs to deepening our impact, 2024 was a year of reflection, growth, and most importantly, joy. The stories and achievements highlighted in these pages are a testament to the

power of hope, healing, and community.

On behalf of our entire team, thank you for supporting Camp Sunshine's mission. Your support ensures that Camp Sunshine remains a beacon of light for families navigating the challenges of a life-threatening illness. We couldn't do it without you.

With heartfelt appreciation,

Joanne M. Bean, RN, BSN, MBA
President & Chief Executive Officer

Camp Sunshine's 2024
audited financials will
be available soon.

Please visit
campsunshine.org/financials
or scan here:



Table of Contents

- 2** A Letter from Our Founder
- 3** A Letter from our CEO
- 4** Our Mission & Dedication
- 5** Forever Fund
- 6** Family Impact
- 8** Impactful Ways to Support Camp
- 9** The Road to 40
- 10** Thank You to Our Founders
- 11** 2024 Program Highlights
- 12** Broadening Our Reach
- 13** Thank You, Volunteers!
- 17** Powering Impact
- 20** 2024 Donors
- 31** Board of Directors & Staff



Our Mission

Camp Sunshine provides hope, joy and community through unique experiences for children with life-threatening illnesses and their families. At our pristine campus on Sebago Lake in Casco, Maine, more than 60,000 children, siblings, parents and caregivers from all 50 states and 27 countries have come together for fun-filled, year-round sessions with families just like theirs. And, thanks to the incredible support of donors and volunteers, our programs are 100% free. Camp Sunshine is where families can focus on recharging, together, in a safe space with medical support available. Camp Sunshine is where families discover a community who understands.

Camp Sunshine is where families find family.

Dedication

Camp Sunshine honors the memory of Tim Porta, a cherished founding board member of Camp Sunshine. As the owner of Migis Hotel Group, Tim's generosity, kindness, and commitment to our mission helped introduce thousands of individuals to Camp Sunshine over the years and helped bring comfort and joy to countless families. Tim's legacy of compassion will forever be a part of Camp Sunshine.

With heartfelt gratitude, we dedicate this report to Tim and the Porta Family. Tim will be deeply missed but never forgotten.



Forever Fund

Camp Sunshine's Forever Fund offers special recognition to those generous individuals who choose to include Camp Sunshine in their wills and through other types of planned giving. These gifts allow Camp Sunshine to solidify its base for the future and ensure that families will be served for generations to come. Recognition of estate gifts in the Forever Fund is not reserved for those who have passed away. In fact, we welcome the opportunity to recognize and thank donors during their lifetime. If you have included Camp Sunshine in your estate plans, please let us know.



Anonymous

Estate of Harold E. Asbury

Dana E. Baratta Family Trust

Estate of Clayton W. Belyea

Estate of Shelton A. Brooks

Estate of Thomas A. Capobianco

Nelson Davidson

Estate of Katherine Derrig

Estate of Margaret Arlene Edwards

Estate of Carolyn B. Foster

Estate of Harry M. Fouts

Estate of Ruth Fuller

Estate of Jacqueline Giorgi

Sophie Godon

Estate of Chester W. Goggin

Estate of Charles Gow, Jr.

R. Milton Gray

Estate of Elizabeth C. Hodson

Dr. Johnson's Camp Endowment
Fund

Estate of Harold C. Johnson

Estate of Theresa E. Johnson

Richard F. Kezer and Family

Kelso Fund

Wendy Klodt Revocable Trust

Estate of Francis X. Langlois

Estate of Joseph A. Libbey

Estate of Priscilla Morang

Estate of Brenda V. Nelson

Estate of Dorothy M. Presada

Diane & Bobby Purkey

Estate of Rebecca Reap

Estate of Donald K. Saunders

Eleanor C. Saunders Trust

Bryon Schiffres and Family

Estate of Frances A. Schroyer

Estate of Elizabeth Sibley-Saltonstall

Estate of Robert B. Sperling

Estate of Mary E. Stacy

Estate of Charles Joseph Turner

Estate of Pauline Von Herten

Estate of Dorothy H. Webber

Welch Family Trust

Paul C. Witzgall Living Trust

Family Impact

"This trip was like finding an oasis, we were able to disconnect, recharge, and experience kindness in ways we don't find often. Most importantly, both of my kids found new friendships and enjoyed 1,000% of their time here."



"The support found at Camp Sunshine is more than pictures or words can explain." The level of comfort is so heartfelt and will forever be a part of our family. Thank you to everyone who supports this timeless, magical place."

"Thank you for healing our hearts and giving us this wonderful gift of happiness and peace."

"Our daughter had a blast doing winter sports that she has never had the opportunity to do before. The best part of Camp Sunshine is all the kids support each other. They don't care if you're good or bad at something, they still encourage you to do it. For a child who has spent a lot of their life in a hospital alone, having the support of others is everything."



"Our daughter has been able to make friends with other siblings 'just like her' - these shared experiences create an immense bond. As parents who see their kids struggle day to day and to see this change, it truly is amazing to watch them thrive in a nurturing environment that Camp Sunshine offers."



"Watching our children bond with other children brought tears of happiness to our eyes. These experiences allowed them to enjoy a sense of normalcy and childhood that have been deprived due to illness. Your support has not only brought joy and light into our lives, but it has given us the strength and resilience to face the challenges of pediatric cancer."



"The Camp Sunshine experience was incredibly rejuvenating. Our daughter, who has various conditions, felt genuinely included and accepted. We enjoyed the delicious meals, the beautiful campus, fun activities, as well as meeting the lovely volunteers, staff, and other families. We loved the strong sense of community."

"As a family navigating the challenges of raising a child with a transplant, the opportunity to retreat to this special place provided us moments of respite, joy, and connection."

"Our time at Camp Sunshine was a wonderful experience that is hard to put into words. Joy and happiness mixed with connections and understanding, and a network of support filled every planned and unplanned moment of Camp - we are so grateful for the opportunity to be here."

"Because of Camp Sunshine, our son got to meet other kids like him. He got to feel normal and have experiences that have not been an option for him because of his illness."

"My son was able to meet and enjoy the company of other kids with brain tumors in a fun and accepting environment. He doesn't know any children with cancer at home, so he was able to connect with others that truly understood what he was going through."



"Despite all the ways that we're all different like coming from different places and having unique health/illness journeys, what brings us together is a desire to connect and make meaning out of the situations that impacted and changed the course of our lives, our child's diagnosis. We will always cherish our time at Camp Sunshine."

"My daughter lives with constant pain and is hospitalized frequently. This also has an impact on my son, seeing his sister in constant pain. He was not able to enjoy his childhood as a result. I am so happy that Camp Sunshine is for the entire family. My daughter and son have thanked me for taking them here. They feel that Camp Sunshine is a magical place where their dreams come true. In fact, my son became a volunteer and intends to continue! Next year, my daughter and I are looking forward to becoming volunteers also!"

"Unfortunately, our journey has been incredibly tough. Our son relapsed in March 2024 after being in remission for 3.5 years. Since then, it has been a grueling experience. As we navigate his treatment, our family is often split, with my husband caring for our younger son at home while I stay with our son at the hospital. Having the chance to spend time together at Camp Sunshine before heading back to the hospital was a true blessing. The kids had an amazing time making new friends and had the privilege of meeting other families who are facing similar struggles. It was so inspiring to witness the strength and resilience of everyone there."

learn more at
campsunshine.org

**Do you know a family
with a child who has
been diagnosed with a
life-threatening illness?**

Please consider telling them
about Camp Sunshine!



year-round
programs



recognized by



COCA-I
Children's Oncology Camping
Association - International
GOLD RIBBON CAMP

Candid.

Impactful Ways To Support Camp Sunshine

Your support is critical, during all seasons.



Refer a Family to Camp

Do you know a family with a child who has been diagnosed with a life-threatening illness? Please tell them about Camp Sunshine!



Become a Monthly Donor

Small gifts make a big impact! Simply enroll online with a credit card using our secure form, choose your donation amount and your card will be charged on the first of the month.



Sign Up to Volunteer

More than helping hands, volunteers are the heart and soul of Camp Sunshine! The spirit, energy and compassion they bring to every Camp session is priceless.



Make a Donation in Honor or in Memory of a Loved One

Make a tribute gift to celebrate a loved one, a special occasion like a birthday, anniversary, graduation, or wedding – or make a gift to honor someone's memory.



Make a Planned Gift

Leave a personal legacy by including Camp Sunshine in your estate plans. Some planned gift options are: Gifts by will, charitable trusts, distributions from IRAs and more.



Become a Corporate Partner

Inspire your customers and employees! Camp Sunshine strives to establish reciprocal partnerships with businesses and groups that align with our mission.



Make a Donation to Support the Family Fund

Your gift to the Family Fund will support every aspect of Camp Sunshine and the greatest needs of our program. In addition to a traditional cash gift, some donors prefer to give appreciated stock (securities), use retirement plan distributions, or make a gift through their donor advised fund.



Sponsor a Bench on Campus

Recently Camp Sunshine replaced the log benches in our amphitheater, volleyball court and in various other places around campus with new long-lasting composite benches. This is your opportunity to "name" a bench to celebrate, memorialize, or commemorate a particular person, event or date. Learn more at campsunshine.org/giving/bench-donation-program



Make a gift from your Individual Retirement Account

"Making a gift to such a wonderful place as Camp Sunshine is as easy as calling your financial officer and requesting they send money from your individual retirement account directly to Camp Sunshine. A great benefit for you is it is tax free and the money qualifies towards your required mandatory distribution for the year."

- A Camp Sunshine Donor



where families
find family



"Happy 40th Camp Sunshine, Maine"

Thank you to long-time donor and volunteer Terry Bovin for sharing her talents and heart with Camp Sunshine in a truly special way. In honor of our 40th Anniversary, Terry wrote and performed a beautiful original song that perfectly captured the spirit, joy, and impact of Camp Sunshine.



Listen to the
song here:



Terry Bovin
performing her
original song at
the Anniversary
Celebration on
August 10th.



The Road to 40

There was certainly so much to celebrate throughout 2024 as we embarked on a full year of special events and fundraisers, including our "Road to 40" campaign featuring five signature events.

The culmination of this campaign was our 40th Anniversary Celebration on August 10th at Camp Sunshine, which was attended by 160 loyal supporters. This series of events was unforgettable, and captured 40 years of sunshine, smiles, and community!



June 8th
Keys for Camp
at the Maine
Classic Car
Museum



August 10th
Summer
Celebration at
Camp Sunshine



August 25th
Rockin' Raft-Up
on Sebago Lake

September 20th
Maine Suitcase Party
with 12/OC



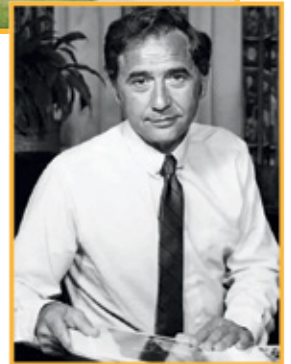
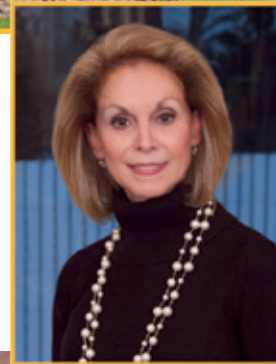
October 19th
Camp Sunshine
Pumpkin Festival
at L.L.Bean





A Heartfelt Thank You to Our Founders

Honoring Camp Sunshine's Founders, Anna M. Gould and the late Dr. Lawrence Gould.
Congratulations on 40 years of providing hope, joy, and community through
unique experiences for children with life-threatening illnesses and their families.



Happy to honor Anna
Gould and the good work
that is being done.

- Julie L. Wolkoff



Thank you for all you do
for providing love & joy
to families & support!

- Denise and David Purinton



In appreciation for
bringing hope, love and
light to the children and
families who need it.

- Emil and Wendy Fachon



So honored to be a part
of the wonderful
organization that you
started 40 years ago!

- Ruth and Peter Calas

2024 Program Highlights

In 2024, Camp Sunshine hosted illness-specific sessions for Oncology, Solid Organ Transplant, Brain Tumor, Sickle Cell Anemia, and Retinoblastoma and Other Eye Cancers (to name a few). We are particularly grateful for our collaborations with partners like Boston Children's Hospital Transplant Program and St. Jude Children's Research Hospital, with whom we hosted a solid organ transplant session and a bereavement session, respectively.

Camp Sunshine also introduced three new programs based on feedback from campers and thoughtful discussions with providers:

Young Adult Session:

Designed for campers aged 18-20 and their families, this session focused on self-advocacy, navigating adult healthcare, and setting personal goals. Parents participated in discussions on managing expectations and encouraging independence while balancing their concerns. Siblings enjoyed beloved Camp traditions and the camaraderie of new friends.

Hearing Loss Session:

This program addressed the challenges of hearing loss resulting from a life-threatening illness or treatment of an illness. Families engaged in educational activities and discussions about available supportive resources, enhancing their communication strategies.

Diabetes: Type 1 Session:

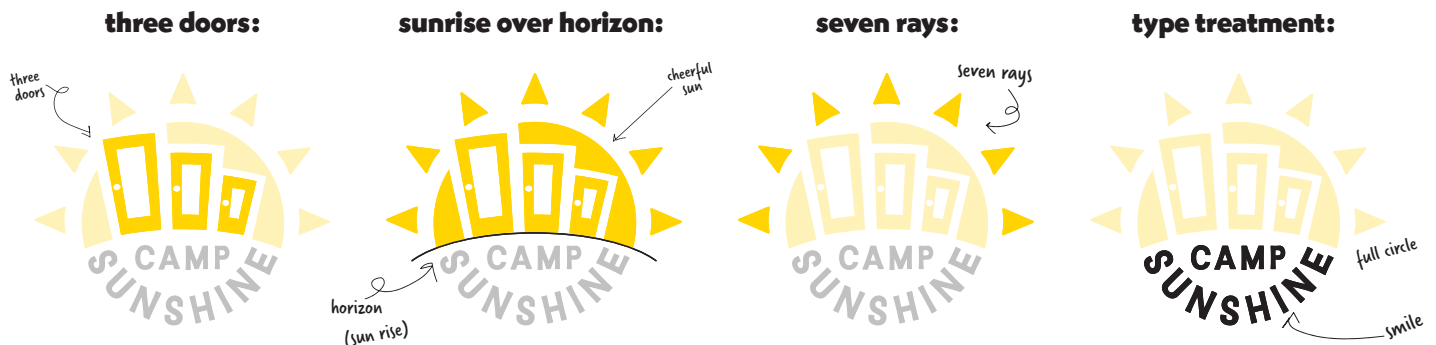
In collaboration with Jerrold Olshan, M.D, a Pediatric Endocrinologist, Beth Blades, FNP from MaineHealth, and students from a local nursing college, we created a fun and safe environment for families to learn about managing blood sugar levels while enjoying activities tailored to their needs.



Broadening Our Reach

Expanding Camp Sunshine's reach and impact required a close examination of our brand and messaging. We engaged in a 'brand identity' project and refined our messaging and after 40 years, changed our organization's logo.

logo symbolism...



One media-related highlight of the year was a segment on the Harlem Globetrotters PlayItForward television series that aired in October on NBC affiliates across the country.



Watch the
segment
here:



Thank You, 2024 Volunteers!



Rayaan Abdirahman
Zamzam Abdirahman
Michaelray Abeyta
Asmi Acharya
Caroline Adam
Elizabeth Adam
Kim Adam
Rachel Adam
John Adams
Hakeem Akande
Susan Akers
Matty Albano
Jason Albro
Natalie Alcantara
Nina Alcantara
Brenda Allair
Margaret Allen
Joelle Altman
Mikayla Alves
Matt Anderson
Suzie Andiel
Kim Andrade
Steve Andrzejewski
Roderick Ariza Jr.
Joey Armandez-Lefebber
Keith Aucoin
Chuck Bagdasarian

Nancy Bajek-Curran
Glen Baldi
Bridgette Balian
Billy Balzano
Maddie Balzano
Sherry Balzano
Brianna Barker
Rosa Barker
Scott Barker
Sydney Bartlett
Mackie Bastarache
Ray Bastarache
Meaghan Bates
Margo Bean
Donna Beech
Marty Beech
Danielle Belliveau
Derek Belliveau
Isabel Bennett
Marjorie Berkman
Calli Bianchi
Ash Bigord
Sanela Bikic
Allie Birkinbine
Terry Biscoe
Beth Blades
Jessica Blandi

Paige Boggis
Magdi Bolos
Kimberly Bonacum
Jack Borland
Elizabeth Botelho
Dana Bou Nicolas
Denis Boulos
Alanna Bowen
Sarah Brennan
Katie Bretta
Elise Brieting-Brown
Emily Brill
Nico Brown
Peter Buckley
Max Burgess
Risa Burgess
Alissa Burlingame
Lauren Burrell
Lauren Burrell
Jay Burrell II
Rob Burton
Sharon Burton
Kylie Bussell
Theodore Caiazzo
Gwen Camara
Justin Camara
Natalie Cameron
Jeremy Campo
Jess Campo
Kailyn Cann
Isabella CaraDonna
Ines Carreiro
Gabriella Carroca-Regan
Casey Carvalho
Sophia Castro
Melanie Cerin Aldana
Ritika Chalise
Addie Charlton
Chris Chavez
Piper Chicoine
Kathleen Childs
Barry Chisholm
Adelaide Chow

Maddy Chuma
Gianna Coggins-Maietta
Maliyah Coggins-Maietta
Danielle Coimbra
Allyson Conlin
Katie Conlin
Maribeth Conroy
Mikey Conroy
Alexis Conti
Rob Cornwell
Carol Cottrill
Stephanie Critchfield
Carson Cronkhite
Keegan Crowe
Michael Crowley
Isabella Cruz
Kat Cruz
Haley Cullinane
Ali Cundiff
Kathleen Cunningham
Kathy Curry
Reese Curtis
Terry Cusick
Mimi Cuthbert
Emily Cutter
Ali D'Arcangelo
Aura Da Silva
Jasmine Dallis
Daniel Dashkevich
Alyse DaSilva
Jenny Davidson
Chuck Davis
Maren Davis
Melissa Davis
Therese Davis
Bentley Davis
Sharlah-Mae Day
Jessica DellaValla
Joseph DellaValla
Molly DellaValla
Ananya Desikan
Jill Deslandes
Rachel Desrochers

Shawn Devine	Heather Ettinger	Reghan Gibney	Sarah Hotchkiss
Jamie Dibbern	Alex Evangelista	Ava Gigliotti	Sabine Hughes-Caley
Stacy Dibbern	Kendall Evans	Heather Gilbert	Emily Hunter
Emma Diko	John Ewalt	Kim Gilbert	Angela Hussey
Blake Dinwoodey	Laura Fagan	Leah Gingerich	Ana Hutchinson
Ava DiRubbo	Anna Falasca	John Godino	Casey Huynh
Kathy Doak	Cheryl Faucher	Cami Goldsmith	Adam I.
Mary Dock	Eddy Fava	Olivia Golhar	Mia Iannotti
Chris Dock	Sarah Fecteau	Kelly Gomez	Fabianna Ibarra
Jodie Dodd	Bob Ferland	Giana Gordon	Adam Ingano
Younton Doe	Corinne Ferrari	Damien Gosson	Emma Jaffe
Sabrina Domohowski	Evan Ferrari	Hannah Gould	Michelle James
Amanda Donahoe	Michelle Ferrari	Chloe Graves	Taylor James
Tamika Donahue	Madison Ferreira	Jura Greeley	Shayne James Jr
Thomas Donahue	Sarah Fink	William Griffin	Naikamasha Jean
Patrick Donahue	Camden Fisher	Zoe Groves	Meredith Jeffery
Charlotte Donaldson Michaelis	Ethan Fisher	Marie Grqtiot	Grace Jennings
Cameron Donovan	Sarah Fitzpatrick	Victoria Guerriero	Cheryl Johnson
Joe Donovan	Maura Fitzsimmons	Emelin Gustafsson	Rachel Jones
Kaelyn Donovan	Michael Florczak	Aidan Hachey	Sophia Joseph
Kieran Donovan	Deirdre Foley	Kathleen Haddad	Athena Karas
Olivia Dooley	Emma Fonger	Jane Hadley Critchfield	Mia Kearns
Maggie Dornisch	Morgan Fonger	Kim Hager	Mary Kelleher
Jenna Doucette	Brady Ford	Joshua Hague	Julia Kellogg
Darren Douglas	Bernadette Fossa	Dylan Hall	Isabel Kelly
Justin Douglas	Raquel Frankel	Avery Hamblin	Bridget Kennedy
Carly Downey	Emalee Freitas	Nicole Hamel	Holly Kersey
Daisy Downs	Sydney Fried	Lily Hamilton	Kaylyn Kersey
Catherine Doyle	Brandie Fulmer	Mo Hanson	Nick Kieran
Skyla Doyle	Christine Fulmer	Jeanne Harmer	Laurel King
Zach Dubuc	Susan Fulmer	Becca Hart	Owen Kobs
Nolan Duffy	Peter Gabbe	Ruby Hart	Rena Koenig
Oceana Duffy	Koda Gadson	Dom Harthorne	Adam Kopacz
David Dunn	Riley Gaetjens	Nick Hartley	Ashlyn Korpak
Jack Dunn	Joe Gaffney	Paisley Haskell	Alexa Kosinski
Joyce Dziedzic	Beau Gagnon	Caroline Hauch	Bethany Kosinski
Emily Elie	Charise Gainey	Robert Heald	Debbie Kosinski
Ted Eliopoulos	Charlie Gainey	Sadey Hedlund	Mark Kosinski
Zoe Ellis	Isabella Gainey	Tyler Heldenbergh	Rose Kuntz
Mae Emery	Isabelle Galetto	Claire Heller	Christian Lafrance
Kristina Eng	Kendra Gallagher	Angie Hernandez	Hailey Lamca
Bart English	BJ Garceau	Darwin Herrera	Lesli Lamca
Kolina Ennis	Brian Garcia	Grace Hilton	Leslie Larsen
Sherry Eno	Isa Garcia	Steve Hoehl	Turner Lavelle
Clementine Enright	Lucy Gauvin	Ellie Hohenstein	Estella LeBlanc
Christa Erde	Laurie Gaylord	Matthew Hood	Amelie Lemay
Charle Ettinger	Melissa Gerrish	Cameron Hortin	Melissa Lemieux

Rosie Leonard
Isabelle Less
Kyle Lessard
Joan Levasseur
Sam Levenstein
Tessa Lewis
Emmerson Lewis-Friree
Arthur Lin
Howard Lin
Justin Ling
Brian Lipe
Mia Liquori
Reese Lizotte
Bruna Lobo
Pippa Locke
Jess Lopez
Michelle Lopez
Sarah Lopez
Dayanna Lopez Sales
Kristle Lord
Ethan Lord
Avery Lough
Kate Lovett
Barb Low
Eric Low
Abby Lowe
Doug Lowe
Kaylee Lucas
Caileigh Lynch
Tadhg Lynch
Ashley Lyons
Lisa Lyons
James Mackay
Jill Mackay
Riley Maguire
Abby Malcuit
Lee Maleno
Beth Malloy
Barbara Manley
Tom Manley
Lizzie Mansen
Siena Marconi
Melanie Marroquin
Elle Marshall
Felicia Martin
Cara Martin
Deanie Martino

Jack Marvin
Gabby Mason
Linda Matos Di Lascio
Paul Maximino
Vesta McCarroll-Christmas
DeeDee McCarron
Caroline McCullough
Nicole McDermott
Abigail McGrath
Aedan McGrath
Maya McInturff
Olivia Mclver
Emma Mclaughlin
Lauren McNamara
Aileen McQuillan
Haleigh Medlin
Dylan Mehta
Jaiden Mehta
Monica Mehta
Niraj Mehta
Kathy Melanson
Celia Melanson
Kathy Menard
Julia Mendez
Isabella Michel
Ty Millette
Mary Pat Mirabella
Savanah Miranda
Borjana Mistic
Tea Mistic
Samira Mohamed
Luca Montague
Dana Montone
Evelyn Montone
Cathy Moran
Julia Moran
Katie Moran
Sam Moreira
Isabella Morillo
Sandy Morley
Betsy Moseley
Shiloh Moskowitz
Selina Moua
Cylissa Mowatt
Savannah Moynihan
Maggie Mullaly
Julie Munyan

Jazmin Murillo
Rachel Murphy
Sarah Murphy
Amanda Murray
Kelly Murray
Lauren Murray
Kate Myler
Ella Nagle
Katie Napio
Luke Newell
Natalie Nicaretta
Paul Niemczyk
Sebastian Nogueira
Jessica Nowillo
Gloria Nsiangani
Kailee O'Brien
Maura O'Brien
Tyler O'Donnell
Heather O'Neill
Donna O'Neill
Mike O'Neill
Quinn O'Reilly
Angie Occhipinti
William Ochoa
Arthur Oelke
Chelsey Oliver
Amelea Oppermann
Michael Orlando
Geneva Outhouse
Caryn Pace
Lily Pace
Anthony Pacillo
Jayden Parkes
Ann Parsons
Nic Pastor
Aasha Patel
Jayshree Patel
Ashley Pawelczyk
Tilly Peet
Charlotte Pelletier
Ezri Pelletier
Audriana Pereyra
Meagan Perro
Rachel Persson
Ellyn Peters
Glenn Peterson
Sabina Petrucci

Ella Pezzullo
Lillian Phanthavong
Sophia Piersanti
Kelsey Plunkett
Michael Polebaum
Ari Pollack
Shaniah Pompano
Cyndy Poray
Jeff Porter
Mackenzie Post
Lindsey Post
Michaela Pozzuto
Dia Prantis
Gisella Priestley
Hannah Purdy
Danielle Purinton
Dave Purinton
Denise Purinton
Izzy Quink
Lexi Radz
Helen Raftery
Jenny Rahkila
Riitta Rahkila
Isabella Raimo
Alex Ramirez Catota
Kai Ramos
Alex Ramsden
Emma Ramsden
Amy Ranaghan
Max Raponi
Michael Raulerson
Tacey Raulerson
Tammy Raulerson
Nate Ream
Katie Reed
The Reeves Family
Cassy Regan
Bertie Retzer
Ellis Retzer
Abby Reynolds
Ashley Rice
Jean Richards
Dave Ricker
Bill Rider
Lyla Ridge
John Riina
Linda Ritt

Kayra Rivera
 Cece Rodriguez
 Jennifer Roe
 Katie Rogers
 Jennifer Rojas
 Xena Rolfe
 Ellie Romero
 Will Root
 Momo Rosado
 Banks Rosario
 Teddy Rose
 Adrienne Ross
 Andy Ross
 Amelie Rudy
 Bethany Ruel
 Jane Rust
 Nanda Rust
 Selena Salgado
 Ava Salvati
 Abby Salwierz
 Jen Sarrasin
 Mary Sarrasin
 Jessica Saunders
 Emma Sawatzky
 Lily Sawyer
 Diane Schaller Hough
 CeCe Schelter
 Bonnie Schirato
 Connor Schmit
 Caroline Schmitt
 Abbey Scott
 Audrey Scott
 Anthony Seaman
 Nilsa Semedo
 Avary Serpa
 Sara Shaff
 Bill Shea
 Blake Sheen
 Kelsey Sherriff
 Katie Shillman
 Kristen Shorey
 Diego Shumway
 Emily Silva
 Michaela Silva
 Millena Silva
 Olivia Silva
 Adryana Simard

Mike Simoes
 Nora Simpson
 Corrin Single
 Issie Skabeikis
 Alice Skiff
 Linda Skiff
 Molly Small
 Devaughn Smilie
 Athena Smith
 Garrett Smith
 Jeanine Smith
 Rebecca Smith
 Laurie Sokol
 Talya Sokoll
 Mary Sorgi
 Trinity Souza
 Gabby Sparano
 Debbie Spear
 Ed Spear
 Jessica Spiers
 Alex Spiller
 Ariel St. Germaine
 Brooke St. John
 Melissa St. Pierre
 Paul Stacy
 Matt Stanton
 Terence Stearns
 William Stein
 Alex Stern
 Gaby Stern
 Nicole Sterste
 Kelly Stirling
 Sue Strezo
 Clare Struzziery
 McKay Sudol
 Faith Sullivan
 Anthony Sweatt
 Shelley Tang
 Derek Tarraza
 Kork Taylor
 Sierra Tennyson
 Alana Texidor Melendez
 Sandra Therriault
 Jayme Thomas
 Mae Thompson
 Fiona Thornton
 Abby Thorup

Maddy Tibbetts
 Rachel Todoroff
 Carol Lee Tonge
 Tom Tonge
 Erin Toohil
 Abby Toothaker
 Kerry Torres
 Maiah Torres
 Bill Toth
 Gail Toth
 Jennifer Toth
 Zahra Towey
 Paige Townsend
 Donato Tramuto
 Khaleb Tucker
 Cam Turner
 Bob Tutnauer
 Leila Uchani
 Jill Vaccaro
 Andrew Vachon
 Hailey Valencia
 Vanessa Van Dyne
 Jackson Vance
 Keenan Vance
 Kristen Vance
 Zoe Vance
 Emma Vander Baan
 Markene VanWagner
 Ivy Varbanova
 Natalia Vega
 Lily Velasquez
 Sofi Velastegui
 Vimbayi Vera
 Matthew Vicenti
 Sophia Viger
 Salem Wagner
 Charlotte Waldert
 Alma Wallace
 Natalie Waters
 Lexi Watkins
 Kenzie Weldon
 Malina Welke
 Tina Welliver
 Norah Wells
 Lisa Wemple
 Tim Wemple
 Jeromie Whalen

Jill Wheaton
 Ben Wheeler
 Chris Wheeler
 Dave Wheeler
 Nick Wheeler
 Sue Wheeler
 Eli Whipp
 Peter Whistler
 Kenzie White
 Ryan White
 Deb White
 Makaiya Wilkinson
 Grace Wilkinson
 Anna Willard
 Kylie Williams
 Lylarose Willis
 Charles Wilson
 Jada Wilson
 Pat Wilson
 Steven Wilson
 Samuel Witke
 Chuxeng Xiong
 Kit Yan
 Alana Yasso
 Nicole Yerxa
 Rita Youkhana
 Jess Young
 Raine Yu
 Angela Yuan
 Julie Zeiler
 Dany Zember
 Madeleine Zember
 Jacob Zengel
 Sigita Zibas
 Roberta Zimmer
 Audrey Zinck
 Maddie Zordan



If we have inadvertently omitted your name or if your name is displayed incorrectly, please let us know and accept our sincerest apologies.

Powering Impact: Community in Action

It takes the hard work, generosity, and creativity of hundreds of people throughout the year to raise the essential funds necessary to make Camp Sunshine sessions possible. The snapshots included on these pages are just a few of the third-party events, fundraising campaigns, and special projects that happened in 2024. These initiatives play a vital role in keeping Camp Sunshine running and thriving and make a lasting impact on our mission of providing unique experiences for children with life-threatening illnesses and their families.



Rally North America's 2024 Eastside Auto Spa Sunshine Rally took teams on an epic road trip through the beautiful back roads of New England with many exciting stops along the way including a special stop at Camp Sunshine! We are so grateful for our partnership with Rally North America. Rally teams this year raised more than \$196,000 to support Camp Sunshine's mission.



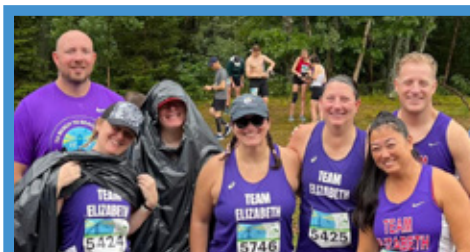
Thank you again to everyone who made the 10th Annual Maine Association of Mortgage Professionals Golf Tournament a tremendous success, including the MAMP Board of Directors, event sponsors, teams, and volunteers.



Ski for Sunshine: Students who are members of Kennett High School's Key Club did a wonderful job coordinating this special event that was hosted at Cranmore Mountain in North Conway, NH to benefit Camp Sunshine!



On August 8, 2024, we celebrated the naming of the Malia Jusczyk Soccer Field. We are deeply grateful for the support of the Jusczyk family and their gift in memory of Malia.



A big thank you goes out all our friends who are part of Team Elizabeth in the TD Beach to Beacon 10k Road Race. This amazing group raised more than \$20,000 to support Camp Sunshine's mission!



Evelyn and Eleanor (along with their wonderful friends and family) were able to raise more than \$2,800 for Camp Sunshine with the proceeds from their lemonade stand!



NAPA Egg Ride: March 9, 2024 was an "egg-celent" day indeed! Our friends from NAPA hosted their beloved annual "Egg Ride" to benefit Camp Sunshine where more than \$25,000 was raised for Camp Sunshine.



Players from Maine Hearts of Pine (Maine's first professional soccer team) visited Camp Sunshine to play in our very first memorial soccer game in honor of Malia Jusczyk!



What a splash! The Maine Polar Dip & 40th Anniversary Kick-Off Celebration was one for the books! This new event will take place at Camp Sunshine each winter. Thanks again to everyone who joined us on February 22, 2024!



Camp Sunshine is grateful for the continued support of the Maine Professional Drivers Association and the Trucking for Kids Convoy planning committee. These groups do a great job facilitating Maine's oldest and largest convoy!



Thank you again to Kathy and Bob Crispin, long-time donors and friends of Camp Sunshine, for including a fundraising component as part of their 2024 holiday party.



In 2010, Gary "2E" Nealey passed away from cancer. Each year, friends and family help to put together a golf tournament at one of Maine's many golf courses in order to raise money in his name and they donate the proceeds to support Camp Sunshine's Family Fund.



The first annual Pine State Classic Strong Man competition was hosted on October 5, 2024 at the Union Fair Grounds. Congratulations to all the competitors and thank you again to the event organizers, volunteers, and sponsors!



Congratulations and thank you again to everyone who made the First Annual Kiwanis Polar Dip such a success! We love seeing this tradition carry on in Northern Virginia and we appreciate the continued support of our friends from the Kiwanis Club of Tysons, VA.



Thanks to our friends from the Rock Church Rock Riders for choosing Camp Sunshine as the beneficiary for their 6th Annual Show and Shine event, which included a 70+ mile motorcycle ride.



From bringing 140 "roadies" to help clean-up the campus in May to sponsoring our August 5-9th Brain Tumor Session and providing a scrumptious bbq lunch for families and volunteers, as well as serving up a delicious meal for parent's dinner that session, corporate partners Texas Roadhouse know how to serve up legendary portions of support! Thank you again!



The New Balance Foundation does so much to support the children with life-threatening illnesses and families Camp Sunshine serves! Thank you again to the New Balance Foundation for sponsoring the August 12-16, 2024 Retinoblastoma Session.



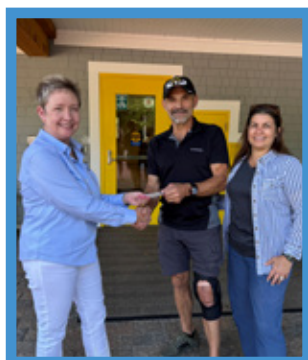
The 10th Annual Central New York Polar Dip hosted at Verona Beach State Park was such a special day! Thank you again to the Camp Sunshine families and volunteers who continue to support our Freezin' for a Reason series of polar dips! Pictured here are event organizers and members of Team Backing Brendan.



Our new Gaga Ball Pit that was donated in memory of Danny Nickerson was installed in 2024! Gaga Ball is a gentler version of dodgeball that is played with a soft foam ball. If the ball touches you below the knee, you're out, and the last one in the pit wins! Thank you again to the Nickerson family and Mabelle M. Burrell School PTO for helping bring this fun game to Camp Sunshine.



The Point Sebago Kids Crew organized a lemonade stand in the summer of 2024 to support Camp Sunshine! They sold lemonade, popcorn, pup-cups, and bracelets, and set up a golf cart car wash.



Thanks again to everyone who supported the second annual "Paddle Palooza" event that benefited Camp Sunshine.



Dairy Queen in Windham, Maine selected Camp Sunshine as their 2024 nonprofit of choice! Thank you again to all the generous DQ customers who donated to support Camp Sunshine's mission.



The 4th Annual Swing "Fore" Sunshine Golf Tournament hosted at the Country Club of Farmington was a huge success! Thank you again to Lanie Estes and Danny Hayes for organizing this event and congratulations to the tournament's top teams!



Thank you to everyone who braved the icy waters in support of Camp Sunshine at the 2024 New Jersey Polar Dip that was hosted in Long Branch! A big thank you goes out to the event's top fundraising team, Wolfpack!

signature events 2025

Please save the dates and share with anyone who might be interested.

JULY 18 Keys for Camp at the Maine Classic Car Museum



AUG 10 Rockin' Raft-Up on Sebago Lake



SEPT 19 Maine Suitcase Party



OCT 18 Camp Sunshine Pumpkin Festival



Please visit campsunshine.org/news-events/upcoming-events to learn about additional events happening throughout the year.

If you're inspired to host your own fundraiser for Camp Sunshine, whether as an individual or a business, we'd love to hear from you—email us at events@campsunshine.org!

2024 Donors

\$100,000 and Above

Linda Last Trust
The Orokawa Foundation
Texas Roadhouse Intermediary LLC
Tap Cancer Out, Inc.

\$50,000 and Above

Acorn Hill Foundation, Inc.
Anna M. Gould
Vertex Foundation

\$25,000 and Above

Anonymous (3)
L.L.Bean, Inc.
The Capital Group
Kathleen and Robert Crispin
Dena Charitable Trust
For Kids Sake Foundation
Suzanne and Ralph Heckert
Megan, Glen and Kole Jusczyk
Richard F. Kezer and Family
Oechsle Family Foundation
Constance O. Putnam Foundation
S/A Maraia Charities
The Reny's Charitable Foundation
Lawrence J. & Anne Rubenstein Foundation
Arthur Russell Smith III Charitable Fund
TramutoPorter Foundation
Anne and Don Vermeil
Selden Von Herten Charitable Foundation

\$10,000 and Above

Anonymous (4)
Abbott Diagnostics Scarborough, Inc.
B L Kitchen Transportation, LLC
Pam and John Beckey
Jonathan Beech Memorial Concert, Inc.
Stephen & Mary Birch Foundation, Inc.
Andy Bovin Memorial Fund
Sharon and Christopher Brezski
Care Camps
CMG Mortgage
Sam L. Cohen Foundation
Copeland Family Foundation, Inc.
Anita A. Detert
Falk Family Fund
Fronczke Family Giving Fund
Industrial Solutions, Inc.
Dr. Johnson's Camp Endowment Fund with the Community Foundation of Sarasota County
K Trucking & Son, Inc.
The Katzenberger Foundation, Inc.
The Ruth & Seymour Klein Foundation, Inc.
Paula and Richard Long
Maine Association of Mortgage Professionals
Maine Properties, LLC
The Billi Marcus Foundation, Inc.
Massena LAB
Linda and Thomas McCarthy
NAPA Maine Distribution Center
Ossipee Trail Motor Sales, Inc.
Arlene Page
The Steven M. Perez Foundation
Point of View Foundation
Mr. and Mrs. Arthur J. Remillard, III - JMM Foundation
Louis F. and Prudence H. Ryan Fund at Hampton Roads Community Foundation
Gary Saltz Foundation, Inc.
Shaw Brothers Family Foundation, Inc.
Claudia and Kevin Silverang
Silverang Rosenzweig & Haltzman, LLC
Skylight Foundation
Three Desert Winds
Transcore LP
Trucking 4 Kids Convoy
Van Sloun Foundation
Virtus Investment Partners Charitable Gift Fund
Jenny and Charles Watson

\$5,000 and Above

Anonymous (6)
Aroma Joe's
Avangrid Foundation, Inc.
Bidu Sayao Memorial Children's Trust
Marilyn M. Blanchard
Bliss Caterers
Boston Red Sox Foundation
Ronald L. Caplan
Sarah and Peter Carpenter
Janemari and Brian Chateauvert
Cogswell Benevolent Trust
Cobbossee Colony Golf Course
The Collective Real Estate Co.
Cross Financial Corp.
DCU For Kids
Tamika and Patrick Donahue
Commander Chase and Mrs. Judy Donaldson
Elwood Family Revocable Trust 2019 of Fidelity Charitable
Enterprise Taylor Charitable Entities
The Ferland Family Foundation, Inc.
The Fuller Foundation, Inc.
Glenmede Trust Company, N.A.
Robert & Dorothy Goldberg Charitable Foundation
William Grant & Sons
Handy Law
Harmon Foundation
Hodgkinson Family Fund of Fidelity Charitable
J & H Charitable Fund
The Jacobs Family Fund of the Jewish Community Foundation
Jodoin Fund of the Essex County Community Foundation
Patricia Schiripo Krovatin and Dr. William Krovatin
Helen and George Ladd Charitable Corporation
Maine Classic Car Museum
Maine Vacation Getaways

Elizabeth K. Mantis
 Caroline Mezoian
 Theresa and Peter Michaud
 Michelle McGann Fund
 Migis Lodge
 Henry L. & Kathryn Mills Foundation
 Moore Brothers Realty
 Moser Family Foundation Inc.
 New England District of Key Club
 Cynthia and Stephen O'Brien Family
 Fund of the Maine Community Foundation
 Daniel O'Dea
 Nancy and Morris Offit
 Sharon George and Frank Oppedisano
 Marianne and Andrew Oxenhorn
 Thomas Anthony Pappas Charitable
 Foundation, Inc.
 Phi Sigma Sigma Zeta Zeta Chapter
 Point Sebago - Venture I, LLC
 LuAnn Pollizzotto
 Prentice Organization
 Amelia R. Rands
 Janice Roy
 Alix Santos
 Sarah and Michael Schnitzer
 Silverang Development Company
 Thomas F. Staley Foundation
 Joseph Tassone
 True Fans For Elvis
 Judi and Peter Wasserman
 White Family Foundation
 Linda and David Williams
 Andrew B. Woodring Gift Fund
 Youth's Friends Association, Inc.

\$2,500 and Above

Anonymous (4)
 All for Kids Home Health
 Alpha Tech Pet, Inc.
 Alterra Property Group LLC
 Atlantic Hospitality

Rod Bailey
 Veena and Ajay Bansal
 Barnard Family Fund of Fidelity
 Charitable
 Terry Barnett
 Victor and Clara C. Battin Foundation
 Donna and Scott Bleakney
 Kaitlin and Jon Boland
 Bonbright Family Foundation
 Broadway Gardens, Inc.
 Budwitz & Meyerjack P.C.
 Mabelle M. Burrell School PTO
 Fundraiser
 Camp Mataponi
 Ruth Chiasson
 Renee Clarkson-Norwood and Todd
 Norwood
 Cohen Family Charitable Giving Fund
 Columbia Forest Products
 Andrea and Kenneth Connors
 Trisha and Jeff Danze
 Stephen L. Dearborn
 Dot Foods, Inc.
 Joyce and James Dziedzic
 Rob Edgerley
 Evelyn & Eleanor's Lemonade Stand
 2024
 John and Ann Ewalt
 Facing Maine
 Gene E. Fachon
 Fair Dermody Consulting Engineers
 Louis and Colleen Fantozzi Charitable
 Gift Fund of BNY Mellon
 Rusty and Micah Fausnaugh
 Andrew and Randi Feinberg Gift Fund
 at Schwab Charitable
 Ed Flanagan
 Lara and Eric Ford
 Fossa Family Fund
 GMS Surgent CPAs & Advisors
 The William J.J. Gordon Family
 Foundation
 Bernard & Marilyn Greenspan Charity

Fund of Schwab Charitable
 Hagaman Charitable Trust
 Carol J. Hancock and Greg Johnson
 Hazard Family Foundation
 Alison and Christopher Herrick
 Grant and Lucia Hicks Family Fund
 Robert & Donna Hjort Memorial Fund
 of Schwab Charitable
 The David & Michele Horan Family
 Fund of Vanguard Charitable
 Caroline and Joseph Hudelson
 "It All Comes From Him" Charitable
 Fund of National Philanthropic Trust
 K Ten Kids Foundation
 Michael Karwath
 Eileen and Pete Keeler
 Kiwanis Club of Mount Washington
 Valley
 Kiwanis Club of Tysons Corner
 Natasha and Ilya Koffman
 Karl J. Krapek
 Land Services USA, LLC
 Lauren's First & Goal Foundation
 Susan R. LeRay and William J. Wright
 Machias Savings Bank
 Maine Field Hockey Association
 Manafort Brothers Inc.
 Bob and Jane Martin Family Fund of
 Stifel
 Martha M. Martin
 Massachusetts Highway Association
 Ruth E. Matthew
 Donna and Brian McElwee
 Peggy McEntee
 Holly and Thomas McKenny
 Robert W. and Gladys S. Meserve
 Charitable Trust
 Messier-Costain Foundation
 Moser Foundation USA
 Mt. Washington Valley Chamber of
 Commerce
 Andrew Murray Jr Family Fiving Fund
 of Fidelity Charitable

2024 Donors

Suzanne and Andrew Murray
 Naples Lions Club
 David Neamtu
 Northeast Delta Dental
 Northeast Event Design
 Nothing Bundt Cakes
 Denise M. Oliver
 Oyster Bay Lions Club Foundation
 Steve Passerman
 Peterson Family Charitable Fund of Fidelity Charitable
 Petit Family Foundation Inc.
 Phelan Family Foundation
 Point Sebago Kid Crew Lemonade Stand
 Geraldine and Richard Prentice
 Elizabeth and James Quinty
 Alison and Nicolas Randanne de Vazeille
 Richardson's Boat Yard
 The Richer Foundation
 Susan Ringler
 The Rock Church
 Stanley & Elaine Rosenfield Charitable Trust
 SHDC Springdale, LLC
 Gina Scanlan and Will Smith
 Walter Schlaepfer
 Harold T.N. Smith Memorial Foundation
 Spectrum Management Services Co LLC
 St. Joseph Church
 Samuel Staten, Sr. Charitable Trust
 Susan and Wesley Sturdevant
 Dr. Alexandra Sweeney and Marc J. Fishstein
 Linda and Alan Swimmer
 Lori and Tom Terne
 Thea's Star of Hope
 Throttle Car Club
 Christen M. Turner and Dr. Christopher D. Turner
 Two Lights Settlement Services LLC

Valley Originals
 Whitefield Lions Club
 The Andy and Debbie Wiacek Charitable Fund
 Wiley Helping Hands
 Xeris Pharmaceuticals, Inc.
 Yogi Bear's Jellystone Park Indianapolis East

\$1,000 and Above

Anonymous (6)
 900 East Eighth Avenue Associates, LP
 Terri and Thomas Abato
 Tim Acri
 Aegon Transamerica Foundation
 Ahs Foundation
 Alligator Adventure
 Melissa and Wesley Alwang
 Leslie and Leon Asadoorian
 Asterion, Inc.
 Atlantic Coast Title
 Auburn Concrete
 Badger Peabody & Smith Realty
 S.W. Bajus Family Charitable Fund of Vanguard Charitable
 Natalie and Michael Barrist
 Bayview Hotel
 Joanne and Paul Bean
 Christopher Beaulieu
 Beck Family Foundation
 Belchertown Lions Club
 Gregory Bickford
 Birchland Plywood
 Susan and Willard Blanche
 Bob the Screenprinter
 The Arnold Bortman Family Foundation
 Terry Bovin
 Christine and Rich Brezski
 Doris and James Brogan
 Brookmead Construction, LLC
 Marie Brown

Brown Nimeroff
 Victoria L. Buford
 Dianne and Thomas Busa
 Tammy and Frank Calicchio
 Jeffrey S. Campbell
 Cascon, Inc.
 John Cavallaro
 Anup Chhabra
 Joyce and John Clay
 Clearwater Paper
 Manny & Ruthy Cohen Foundation
 Phyllis Cohen
 Coke Northeast South Portland
 Kevin Conkey
 Corrado Construction Company
 Toni and Thomas Coyne
 Mrs. Nelson Creath
 Stephanie Critchfield
 David Currier
 Edith C. Crocker Charitable Trust
 D. Cole Jewelers, Inc.
 Cynthia and Edward Daffan
 Jennifer and James Davis
 Shirley A. Davis
 Defining Lines Landscaping
 Detwiler Road Holding Company, LLC
 Osborn Devoe Charitable Fund
 Dexcom
 Russell DiGiallorenzo
 Direct Relief
 Julie and Andrew Doyle
 Joy and Tom Drew
 DropKick Murphys
 Duane Morris, LLP
 David Edmiston
 Electric Boat
 Erik's Church LLC
 Vicki and Gary Erlbaum
 David Facchini
 Fairfield Ludlowe HS key Club

Family Chiropractic Associates	Daniel King	Jeniene and Christian Randazzo
Herbert H. Farnsworth	Kiwanis Club of Sheffield, Inc.	Eric Raymond Charitable Fund of Vanguard Charitable
FIP Construction, Inc.	Knights of Columbus Uxbridge Council 1562	Charmian and John Reap
First Resource Bank	Mu-Li Lai	Shellie Reed
Stephen Fish	Louise and Roger Lancot	Andrea N. Reitzel
The Flynn Company	Legacy Properties Charitable Giving Fund	Renewal by Andersen of Maine
Danielle Gaudette	Kathleen Lister and Jeffrey A. Reinhold	Jennifer Richardson and George Jaquette of J.P. Morgan Charitable Giving Fund
Lucy and Richard Gendron	Lorilee and Robert Locke	Mary Jane and Rocco Risbara
Diana C. Ghize	Melinda Loring	Linda C. Ritt
Jill Glidden	Jan and Al Lucas	Rittenhouse Law, LLC
Susan and Lawrence Gordon Fund of Schwab Charitable	Maine Metal Buildings, Inc.	M.L. Rogers, Inc.
Gorham Savings Bank	The Majzan Family	Ronca Construction Corp.
Jason D. Griggs	Martin's Point Health Care, Inc.	Susannah Ross
Dorothy and Donald Grosset	McIntyre Family Foundation	Cheryl Roth
Lynn and Raymond Guilbault	Michael Melninkaitis	Bart Rowley
Molly and Steven Hanford	Kathleen and John Meserve	Rutman Family Fund of New Hampshire Charitable Foundation
Mark Hauser	Anna-Lynn and Trevor Milkins	Saint Joseph High School
Heavenly Brickks Charitable Foundation	Miller Family Foundation	Bill Sandusky
Douglas R. & Linda V. Herman Fund of Fidelity Charitable Fund	The Mimi Fund of the Maine Community Foundation	Sargent Corporation
Hews Company, Inc.	Susanne and Eustace Mita	Liz Seares
Stacy and Ronald Hodge	Juliet and Dexter Morrison	Sebago West Shore Cottages
Mary Kay B. Holly	Nagle Law, LLC	Joey Shaw
HOODZ of Southern Maine	New Hampshire Charitable Foundation	Shaw Brothers Construction, Inc.
HotWorx South Portland	NexClaim Recoveries LLC	Robert and Virginia Shiller Foundation
The Philip S. Hunter	Noble and Greenough School	Shipyard Brewing Company
Huntington Beach Police Officers Association	Amy and Michael O'Neal	The Shribman Family Foundation
DJ Huzz Premier Music Entertainment	Orange County Chapter of PORAC	Sibley-Saltonstall Charitable Foundation
Leonard F. Iacono	Paddle Palooza	Signature Custom Cabinetry
Kelly and Anthony Intrieri	Paul's Boutique	Sandra Silverang
Barbara Irish	Penobscot Financial Advisors	Dawn Simmons
Irving Oil	Piazza Management Company	Jodi Sokoloff Family Fund of Fidelity Charitable
J&J Commercial Electric LLC	Porta & Co.	Starbucks Foundation
Christine M. Jelen and John F. Jaeger	Portland Plastic Pipe	William Sterling
JP Chesapeake Management	Project Cumberland & York County Chapter	Richard L. Stimpson
Keating Charitable Family Fund of the Cambridge Community Foundation	Prone Family Foundation	Storey Brothers, Inc.
Linda and Frank Kemna	Amber Purty and Anthony DiPhilippo	Sturgis Charter Public School Key Club
Kennett High School Key Club	RSC Insurance Brokers Inc	Sugarloaf
	Michael Rancourt	

2024 Donors

Sumsion Family Charitable Fund
Sunset View Hospitality, LLC
TRDS Holdings, LLC
Tandem Diabetes Care
TD Bank, N.A. Corporate
Joanna Tejeda
Thirsty-Turf Irrigation, Inc.
The Donors' Fund
Ronald G. Thompson 2006 Revocable
Three Rivers Kiwanis Milo-Brownville Foundation
Time4Publishing
The Toth Family
Town of Longmeadow
Troiano Waste Services
troutman pepper
Tully Family Foundation
UBS
US Roofing
Veeva Systems
Carole Schwartz and Robert Vonick
Beryl and Ralph Wanner
Arthur K. Watson Charitable Trust of J.P. Morgan
Daniel Wayland
Gregory Wayne
Wells Fargo Community Corporate
Wentworth-DeAngelis Insurance
Dr. Sally A. West
Westbrook Eagles Auxiliary 2977
Peter Wilby
Annette and Peter Wilson
Woodward Properties, Inc.
Yogi Bear's Jellystone Park Mill Run
Michael F. Young
Yusen Associates Inc.

\$500 and Above

Anonymous (11)
Laurie and Maurice Aburdene
Accounting Buds

George H. Achey
Kara Acri
Missy Adams
Advisors Living Real Estate
Akari Salon & Spa
Susan and Timothy Allport
AMVETS Post FL 47
Karen Anderson
Louis Arminio
Judith D. Asselin
Regina and Frank Azzolino
BHA Enterprises, LLC
Elizabeth and Robert Backhaus
Timothy Baker
Tony Baker
L. Dianne Barbour
Rielly Barnett
Allen Baron
Barry Construction Services LLC
Marjorie and Raymond Bastarache
Bearcat Ventures LLC
Donna and Martin Beech
Amar Bhati
Linda and Bruce Binnix
Bladed Beauty
Margie and Edward Blanchon
Bob's Place
Brian Bokowy
Cheryl and Richard Bolduc
Joel Bonds
Boston Textile Co.
David Bourne Construction LLC
Breezwood VFW Post 8333
Chris Brown
Timothy J. Brown
Buchanan Ingersoll & Rooney PC
Ruth and Dave Buko
Joy and Dennis Burk
Ruth and Peter Calas
Caliber Service Management

Camden National Bank
Joel Campbell
Joan and John Cann
Joan Cavallero
Laura Charest
Jeff Clark
Clement Bros. Lawn & Landscape, Inc.
CMS Transportation, Inc.
L.S. Coburn Fund of Fidelity Charitable
Joanne and Charles Cochrane
Commercial Burner Maintenance Limited
Controlled Environments, Inc.
ConvenientMD
Margot Cosentino
Country Cabinets, etc., LLC
Jim Craige
Kimberly Cramer
Crest Chevrolet, Inc.
Candie Cricones
Robert Crockett
Thomas O. Crowley
CRS Management, LLC
Laurie Cunningham
David Cutler
D&M Management Services Inc.
Jane B. Daggett and William O. Daggett, Jr.
Suzanne and David Davis
Joshua Deeter
Karla E. Moore and Roger E. Densmore
Charlene and William Deuber
Katherine Dickie
Dirt Works Inc
Michael Doheny
Gail Dohrn
Mark Doiron
Janard Driscoll
Alyssa Dumond
Alice and David Eagleson
Bryan Eby

Elite Limousine
Elle Medical Aesthetics Boutique
Injectable & Skin Care Studio
Employees Community Action
Committee
Jacqueline Errera
E-Trade from Morgan Stanley
Emily Rose Ritvo Beckman and Andrew
Ewalt
Exiles MC Mexico Chapter
Arleen Fallon
Falmouth Lions Club
Al Fanning
Farmers Insurance
FedPoint
Catherine and Edward Ferland
First Congregational Church of East
Baldwin
Sharon and Herb Fithian
Evelyn and Kevin Foley
Foley/O'Carroll Family Fund of Fidelity
Charitable
Fournelle Realty LLC
Betty S. & Robert B. Frank Charitable
Foundation
Laurie and Barry Franks
Kathleen Frasher
Freedom Riders Association
Friday Threads
Carolyn and Peter Gabbe
Gamwell, Caputo, Kelsch & Co PLLC
Nancy J. Garrison
Andreas Gavris
Tosha Gehringer
Matthew R. Gentile
Claudette and Jerry Giacomino
Paige N. Gibson
Jan Gilkey
Cristina Giuliani
Dot Gonyea and Walter Gurney
Jay Gould
Graybar Electric

Great Falls Family Foundation
Wiley Griste
Lisa and Gahan Hagerty
Sally and William Haggett
Lorri Hall
Shads
Hazzard Customs & Classics, Inc.
Corey Heckman
Donny Heenan
Jillian and Rodger Herrigel
Betsy and Stephen Hershey
Margaretann Higgins
Jason Higgs
Glenn J. Hille
Brad Hlinko
Donald Hoffman
Mark Holmgren
Brenda and Brian Howdershell
The Hulbert Family
Hunting Dearborn
Erika Huston
Integrity Transportation
Lorraine and Mark Irving
The Jacobson Giving Fund of Fidelity
Charitable
Mike Jaffe
James Construction Co., Inc.
Steve Janzen
Jedron Realty, Inc.
Dave Johnson
Cheryl and Doug Jones
Schoellerman Foundation
Jon Katona
Stan Kazee
Frank Keenan
Tracey and Edward Keenan
Dan Kelleher Heating & Plumbing
Susan and Jason Kennedy
Michael Kinzie
Dr. Alexis and Jon Kleinman

Mary and David Kmetz
Knights of Columbus Maine State
Council
Thomas P. Konikowski
Patricia and Joshua Krumholz
The Lafferman Family Foundation
Sarah and Randy Lake
Lane-Dube AMVETS Post 33
Lang Family Giving Fund of Fidelity
Charitable
Brandi Lawler
Sam Legere
Liberty Mutual
Joan and Rick Libner
Town of Limington
Patricia and Richard Logan-Greene
Adrienne Lovejoy
LP Appliance & Furniture
Duncan MacDougall
John Machado
Ann Mahan
Maietta Lawn Care Inc.
Maine Laser & Aesthetics
Maine Camp Experience, LLC
Maine Game Warden Foundation
Teresa Malmer and Dr. Bruce Malmer
Samuel P. Mandell Foundation
Barbara and Thomas Manley & Family
David Mannette
Ed Mattos
John Mauger
Diane and Howard McDowell
Edward McDowell VFW Post 2648
Will T. McPherson
Law Office of Meyers & Burnett
Karen A. Miller and James C.
Burkhardt
Milner Family Giving Fund of the Bank
of America Charitable Gift Fund
Megan and Louis Minella
Connie Minervino

2024 Donors

Jan and Samuel Minervino
Mission of Mercy
Momjian Anderer, LLC
Paul Montgomery
The Moore Family Giving Fund with Fidelity Charitable
Lisa and Anthony Mosca
RoseMarie and Anthony Moschetta
Bob Murphy
Erin and Justin Nackley
Theresa Nibi
The Nonantum Resort
Jamie Nonni
Oliver Mechanical Services
Omni Technologies
Brian ORourke
Kevin O'Shea
Richard Oulundsen
Owen Haskell Inc.
P & K Sand & Gravel, Inc.
Jeffrey Pappalardo
Park Place Flooring
Soo Parkhurst
Hardik Patel
Patrons Oxford Insurance Company
Betty* and Hugh Pearson
Mike Pedrick
John Pellissier
Bryan Peters
Brian Peterson
The Ken & Joanna Phelan Family Fund
Shawn Pike
Lucile and Maurice Pollak Fund
Justin Pollard
William Porcello
The Press Hotel
Pristine House Cleaning
Michael Prus
Claudia and Edward Pryor
PTC

Ann Puddister
Denise and Dave Purinton
Diane & Bobby Purkey
Pye Barker Fire and Safety
David Quatrella
Jane Chipman and John Ragucci
Eugene C. Rainis
Rapp Family Foundation
Faith and James Reel
Joshua Reilly
Lauri Kavulich and Edward Reitmeyer
John R. Restivo, M.D. PLLC
Wes Ridlon
Cristin Rioux
RockCyber LLC
Ann and John Roda
Shannon Rogish
Bryan Rollo
Roman Catholic Archbishop of Boston
Mitchell Rosengarten
Beth Zemble-Rosenzweig and Philip S. Rosenzweig
Betty and Herb Ross
Bernard and Ruth Rothfeld Children's Foundation
Gail and Jeffrey Rushing
Dennis J. Ryan
Susan and Matthew Ryan
Saint Louis Catholic Church & School
Sandollar Spa & Pool
Meredith Sarda
Joseph Scaturro
Schaeffer Douglas Title
Veronica Schenider
John Schorum
Charles Schwab & Co., Inc.
Maxine R. Sclar
The Scott & Sunny Team of KW Realty
Seacoast Ski Club
Richard Sears

Adam Shapiro
Shaw Industries
Siena Heights University
Snazzy Pet Bed & Biscuit
John B. Sorgenfrei
Megan Sotiropoulos
St Edmund Preparatory High School
Irene Stamos and Luis Donoso
Standard Insulating Co., Inc.
Fass-Stillman Family Fund of Vanguard Charitable
Nadine and Jonathan Stockton
Daniel and Laura Stone Charitable Fund at Schwab Charitable
Frances F. C. Sue
Sun Outdoors
Lisa and Michael Swanson
Damian Tanenbaum
Tarella Family Charitable Fund at Schwab Charitable
Kevin Templeman
Joan F. Thalheimer
Thermal Recovery Systems, Inc.
Erin Thompson
Denise and Bruce Tredwell
Thomas Tremblay
Treworgy & Baldacci of Portland Maine LLC
Tropical Smoothie Cafe
Nancy T. Trunzo
Louise Van Winkle
Mary Ann and Tom Vanderploeg
Kathryn E. Lemieux and Michael P. Vereline
William Vessal
Vessel Services Inc.
Vina Ann's
John B. Vinton
Vossen Wheels
Charles A. Waterman
Watson Family Fund of Fidelity Charitable

Caroline and John Weaver
 Jane Weiman Good
 Samuel Weinstein Family Foundation
 Weir Greenblatt Pierce LLP
 Brandon White
 Dre Whitson
 Tyson Wilkins
 Louise and Andrew Wilkinson
 Theresa and Anthony Williams
 George Wilson, Jr.
 Suzanne and Robert Wilson
 The Alexiana C. & Steven D. Wladis
 Foundation
 Alex Wolfington
 Barbara Wolfson
 Wurth Baer Supply Company
 Caitlin Wyman
 Amy and Brent Yankolonis
 Yarmouth Lions Club
 Mike Yenerich
 Cecilia Zhu
 Dennis Ziegler
 Michael J. Zipp and Family Charitable
 Fund of Fidelity Charitable
 Nini and Robert Zoppel

\$250 and Above

Anonymous (18)
 1620 Investment Advisors Inc.
 2Gether We Cook
 A&M Partners, Inc.
 A1 Miller Plumbing
 ACDD Realty, LLC
 Lynda and Shawn Adams
 Anita and Stephen Adelson Charitable
 Fund
 Stanley F. Adler
 Joy and Chip Ahrens
 Elizabeth and Steven Akers
 Ari Alexander
 Brett Alexander

Cliff Alligood
 Ogechika Alozie
 American Legion Charles S. Hatch Post
 79
 American Legion Kenison-Hooper Post
 128
 Derek Anderson
 Lisa and Ronald Anderson
 Barry Arndt
 Pam Arnold
 Arundel Lodge 79 - John S. Peabody
 Fund
 Chalmers Auer
 Autumn Celeste Photography
 B&B Towing Gateway Auto LLC
 Jane and Andy Bailey
 Kathleen and Charles Baker
 Katherine Balaban
 Scott Balestrier
 Erin and Jason Baltes
 Laura J. Bard
 Frances E. Reddig-Barry and Raymond
 M. Barry
 Thomas J. Batterson
 Gina R. Montefusco Beldner and
 Joshua E. Beldner
 Benoit Family Charitable Fund
 Josh Berger
 Bergman Family Giving Fund
 Bernie's Auto Repair, Inc.
 Jaci Bertrand
 Jeff Best
 Binnie Media Group
 Blackbaud, Inc.
 Phyllis and Robert Blanton
 Howard Blaustein
 Bleakley Platt & Schmidt LLP
 Jason Bledsoe
 Meris and Kenny Blumstein
 Christopher Boothby
 Karen and Keith Borgstrom
 Alyssa Bourke

Cynthia and Todd Brisky
 Randall B. Brown
 Ron Brown
 Terri Bruch
 Jeff Bruns
 Steve Buckner
 Risa and Scott Burgess with Fidelity
 Charitable Fund
 Burlington Quilters' Guild
 Burns Family Fund of Fidelity Charitable
 Harvey E. Buzzell, Jr.
 C&N
 Cafe Fresh Bagel
 Geraldine Callahan
 Kristin and David Camiolo & Family
 Carr Financial Group
 Jack Carroll
 Christine and Greg Catarella
 Jessica Catlin
 Alyss Cavanagh
 Howard J. Chadbourne, Jr.
 Alane Chalane
 Dr. Linda Chaudron
 Kenneth Cianchette
 Susan Clark
 Christopher Coffey
 Heiser Cohen Family Fund
 Jeffrey M. Coleman, D.D.S., Inc.
 Robert Coleman
 College Town Communities, LLC
 Stephen Collier
 Nancy Conkey
 Jean and Robert Conlin
 Janine and Michael Connolly
 Tammy Cook
 Mindy Cooper and Michael Kaminsky
 Jennifer Cornell
 Lisa and Joe Costa
 Cheryl Cough
 Susan Klein and Andre Couillard

2024 Donors

Joy and Andrew Cowles	Rob Freudenberg	Chloe & Luke Helwig
Brian Crane	Kevin Frye	Alexis Henderson
Cross Family Charitable Fund	Dennis Fulk	Anne Heros, Ed.
Cross Insurance	Shanda Fulton	Willard Hibbard III
Midge Curry	Joseph B. Gaffney	Barbara M. Hightower
Nelson Davidson	Barbara Gardner	Nicholas Hilton
Cathy Davies-Harmon	Jeffrey Garland	Cynthia Hiscox
Matthew Davis	Nancy Gaudet	Hoisington of Fidelity Charitable
Susan Davis	Lois A. Gelernt	Kristin and Chris Holden
Patricia Flynn and Colonel James E. De Zutter	Darren George	Holy Trinity Philoptochos Society
Denmark Lions Club	Donald T. Getty	Roxi Horton
Diversified Communications	Janet Gleason	Linda G. Hubbard
Angel Donovan	Christine Gonzales	Nancy and David Hunt
Michael Dorf	The Good Life Market	Drs. Victoria R. Masakowski and Roger C. Inhorn
Karen and Charles Dumond	Jacques Gordon	Laine and Robert Jacoby
James Dunn	Paige Goss	Diane and Peter James
Joel Dunn	Michelle Gosselin Ervin	Cathy A. Jerome
Shivam Dutta	Meg and Mark Gould	Chasity Johnson
Kelly Dyer	Gertrude and Ramon Granda	Marian Johnson
Emily E. Dziedzic	Dr. Alexander Grande III	Drew Kariofiles
Philip R. Earley	R.L. Greenlaw & Son	Laura and Lawrence Kaufman
East Side Auto	Michell Griffith	Kerri Ann and Jeffrey Kaufmann
Michele and Matthew Elkes	Kent Guernsey	Kevin Keane
Erik's Church LLC	Julie Guthrie	Michael Keane
Christopher Estevez	Beth Halladay	Amy Keith
Drs. Heather and Leigh Ettinger	Frank Hallinan	Brian H. Kim
Claire Eudy	Mark B. Hallowell and The Estate of Cynthia J. Hallowell	Julie and Bill King
Wendy and Emil Fachon	Olivia J. Hamilton	Judith Kirklin
Falmouth Elementary School Student Fundraiser	Sarah Hamilton	Kiwanis Club of Claremont
Sheila Fay	Staci Hangey	Julia Klein
Robert Fernald	Barbara Harrington	Manisha Kotian
John Fitzgerald	Harris and Reider Families	Nick Kova
Debbie and Robert Forman	Jessica Berman and Arthur Harvey	Stephanie and Roger Kramer
Marsha and Gary Forman	Patrick Harvie	Judith and Ronald Krilla
Frederick Fortier	Zoltan Hatos	Selma and Thomas Krol
Scott Foster	Kymerlee Haynes Castillo	Alison Krueger
Free in Jesus Church	Derick Haywood	Janine and Richard Lamy
Dr. Arthur Freedman	Gary Hebbard	Stephen Lane
Eric Freedman	Kim Hede	Cheryl and Eliot Lappen

Lesser Charitable Fund of Fidelity Charitable

Theresa Libby

The LiRo Group

Leslie and Kevin Lobisser

Lone Pine Brewing Company LLC

Rebecca Lovalvo

Elizabeth Lowe

Pete Luciano

Paul F. Luther

Taylor and Quinn MacNulty

Heidi and Kurt MacVittie

Mainstreet Social

Robin and Stephen Malasky

Market Street Settlement

Marshfield High School Key Club

Mike Marti

Julie Martin

Marie and William Martin

Carmela and Bryan Mascio

Cheryl and Richard Matthews

Dave Matthias

Ralph Mauger

Sabina Mauro and Jerry Roche

Nancy Diamond and Jeffrey Mayer

John Mazur

Richard McCarron

Lisa McCulloch

Elizabeth Carter and Howard McDonell

Laura and Paul McGrath

Neil McLean

Kathleen Chancler and Richard L. McMonigle

Marion McNally

Pamela and Bart McNealy

Penny McVay

Delbert Mecum

Debbie Medley

Kimberly and Mark Medley

Melia Giving Fund of Fidelity Charitable

Anita Menon

Jacob Michaud

Charles Mielke

Milford Lions Club

Susan and Rick Miller

Clea and Neal Miner

Stephen Misleh

Stephanie and Jeffrey Moch

Monteith Family Charitable Fund of Fidelity Charitable

Ryan Monteith

Stephanie Moore

Ann Marie and Dennis Morgan

Karen Sue, Richard Moroney and Family

Mary and Don Mulligan

Karin and James Murphy

Kevin F. Murphy

Michael Murphy

Nadherny Family Charitable Fund of Fidelity Charitable

Siana LaForest and David J. Nagle

NAPA

Navillus, Inc.

Cheryl and James Neill

New England Camping Association, Inc.

New England District Circle K International

Melissa Newcomb

Rachel Nudelman

Dr. Amy Nulsen

Oakhurst Dairy

Jun Ogawa

Ogunquit Playhouse

Jacob Olds

Susan Osborne

Judith M. Ottley

Papa's Ice Cream

Fred J. Parent

Andrew Parsons

Ravi Patel

Pat's Meat Market

Pat's Pizza of Auburn

Payroll Management

Ed Pennell

Michael Phelan

Phelps Family Fund at Schwab Charitable

Colleen Hartigan-Piatak and John Piatak

Anne and Tom Pielage

Steven Pielage

Pompeo Sand & Gravel

Walter Prince

Protagon Display

Mirella I. Raible and Dr. Donald G. Raible

Reading Lions Club

Kathleen and Kenneth Reilly

Margie Rice

Richmond High School Key Club

Jill Ripley

Riverside Golf Course

Ann Roberge

Caroline Robson

Gene Rogers

Jean and Talmage Rogers

Tony Rollins

Catherine A. Swalec-Roseen and Timothy A. Roseen

Sharman Rosen

Ann H. Ross

Susan and Steven Rostoff

Rotary Club of North Conway

Jennifer and Mike Rotondo

Tracy Rowe

Rowe Family Group

Saffer Family Fund of Fidelity Charitable

Angela and Jerry Sager

Leah Saifi

Amy and Peter Salvatori

Jacques Santucci

2024 Donors

Chris Sanzone
Gregg Sargent
Sumit Sarkar
Regina and Edward Sarti
Scarborough High School Key Club
Bryan and Dave Schul
Michael Schuncke
Larry Schutte
Stuart Sclater-Booth
Mary and Richard Scott
Sea Land Energy of Maine Inc.
Seadog Brewing
David Segal
Zeev Sela
Susan and Richard Shafer
Pat and Brian Shannon
Sanjay and Indu Sharma
Nicole and Toby Shere
Kevin Shields
David Shipley
Victoria Shroyer
Lynn Silverstein
Nick Skaats
Timothy Skehan
Joseph & Susan Smith Charitable Fund
DE of Fidelity Charitable Fund
Glenn Snyder

Heather and Jimmy Socci
Sandra and Dennis Solinsky
Starr Family Trust
State Farm Insurance Companies
Terence T. Stearns
Warren Stieglitz
Conni String
Jennifer and Ron Sturzenberger
John Suddeth
Kathy and Jack Sullivan
Meghan Sullivan
Kate Surber
Jackie and Edward Tetreault
Phillip Thornberry
Titan Mechanical, Inc.
Lori A. Tocco and Jeff Fleming
Beth and Jeremy Tonet
David J. Toole
Amy A. Torrey
Clive Tracey
Lindsay Tracy
Ross Twanmoh
Amy Ullman Charitable Fund of
Schwab Charitable
Unity Lodge No. 3 I.O.O.F.
Paul E. Ureneck
Brian Urlage

Viking Lumber, Inc.
Vitale-Brown Charitable Giving
Fund of Renaissance Charitable
Foundation
Manuel Vizinho
Tracy Voss
Mark Wagner
Jonathan Weiner Charitable Gift Fund
of Fidelity Charitable
Debra White
White Mountain Oil and Propane
Charles Whiting
Portland Radio Group
Widows Sons Third Degree MRA
Eric Williams
Barb Wulker
Nicole Wulker
Stacy Yafeh
Jean and Dave Yost
Christina Youseff
Melissa and Jimmy Yu
Randy Yucha
Daniel Yutronich
Zaklin Family Charitable Fund of the
National Philanthropic Trust
Zaneta Zien Osiecki and Lukasz A.
Osiecki

If we have inadvertently omitted your name or if your name is displayed incorrectly, please let us know and accept our sincerest apologies.



Board of Directors

Camp Sunshine's Board of Directors is comprised of distinguished individuals and professionals dedicated to providing ongoing support to children with life-threatening illnesses and their families, and to maintaining fiscal responsibility and prudent stewardship of the organization's resources and assets.

Anna Gould Founder/Board Chair of Camp Sunshine, Retired Businesswoman, Resident of Florida.

Joanne Bean President and Chief Executive Officer

Ralph Heckert Senior Vice President, Shareholder, Family Office, Capital Group Companies, Resident of Florida.

Charlie Houser Founder & Principal, Haverford Development Partners LLC & NetNet Payments LLC, Resident of Pennsylvania.

Marcy Isdander Owner, Camp Mataponi, Resident of Florida.

Jed Porta Partner, Migis Hotel Group, Resident of Maine.

Michael Rotondo CEO, Altitude Trampoline Parks, Resident of Georgia.

Dan Shaw Owner and Co-Founder of Shaw Brothers Construction, Inc., Resident of Maine.

Kevin Silverang, ESQ Managing Member, Silverang, Rosenzweig & Haltzman, LLC, Resident of Pennsylvania.

Joseph Tassone Secretary/Treasurer, Former Executive Vice President and Officer of Identiv, Inc., Resident of Massachusetts.

Michael Wisecup Commander, United States Navy, Retired, Resident of Maine.

In Memoriam

Lawrence Gould, PhD,
Co-Founder of Camp Sunshine

David Frohnmayer, Esq.

Martin Grossman

David Hancock

Joseph Pappalardo

Tim Porta

Albert Ragucci

Erna Viterbi

Medical Advisory Panel

Camp Sunshine's Medical Advisory Panel is an interdisciplinary team of professionals that provides medical oversight for Camp Sunshine.

Anne Heros

Jerrold Olshan, M.D

Lisa Howell, LCSW

Keith Rosenberg, M.D

Kelly Hudock, CRNP, DNP, CNE

Christopher Turner, M.D

Emma Murray, NP

Staff

As of April 14, 2025

Leadership Team

JOANNE BEAN,

President &
Chief Executive Officer
jbean@campsunshine.org

RUTH CALAS,

Vice President of Development
rcalas@campsunshine.org

ROGER DENSMORE III,

Vice President of Finance
rdensmore@campsunshine.org

STEPHANIE FEYLER,

Vice President of Program
Operations & New Business
Development
sfeyler@campsunshine.org

KAYLEY WALKER,

Associate Vice President
of Communications
& Strategic Initiatives
kwalker@campsunshine.org

Jamie Arcand
Hospitality Coordinator

Ian Barker*
Front Desk

Darren Belliveau
Activities & Facilities
Coordinator

Teresa Blaschke
Director, Corporate /
Foundation Relations
& Stewardship

Randall Breton
Facilities Coordinator

Tricia Burrell, RN, BSN, CEN
Camp Nurse &
Clinic Coordinator

Mary Ellen Cafiso
Executive Administrator

Margot Cosentino
Director of Volunteer
Engagement & Activities

Katelyn Davis*
Kitchen Manager & Chef

Travis Davis*
Dishwasher & Kitchen Prep

Sinari Diliiza*
Prep Cook

Jenny Edwards
Hospitality Coordinator

Jocelyn Ferland
Database Manager

Penny Fox*
Database Analyst

Zack Gray
Facilities Coordinator

Lisa Howell, LCSW*
Family Engagement
Facilitator

Rachel Jorge
Recruitment and Program
Operations Coordinator

Michele Malier
Hospitality Coordinator

Bonnie Miller
Volunteer Coordinator
& Camp Store

Karla Moore
Family Engagement
Manager

Cory Small
Director of Facilities

Lilly Souweine*
Activity Assistant

Brandon Therriault*
Activity Assistant

Sandy Therriault*
Front Desk

Jessica Thibodeau
Events & Graphic
Design Manager

Belinda Van Decker
Assistant Facilities Director

Diane Ward*
Master Gardener

Kenneth Ward*
Gardener Assistant

Maddie Zordan*
Activity Assistant

***Part-time/
Seasonal Staff**



where families
find family

There are places where family can be found.

Not just those that share your home,
but a different, bigger kind of family, too.

A place where you all find yourselves at the same time,
sharing your journey together. A journey that brings you
close, and bonds you in ways that only family can.

You will find your family at Camp Sunshine. Old and new.

A family that makes you feel at home,
even when you're far away.

Here at Camp Sunshine, we provide hope, joy and
community through unique experiences for children
with life-threatening illnesses and their families.

With a sense of understanding and
comfort that only family can offer.

Comfort that gives you permission to have fun together.

To show off your talents together. Laugh together.

Play together. And make wishes together.

Where a week can connect you for a lifetime.

Where you keep in touch no matter where
you are, or how long it's been.

Where the day you leave, you talk about the day you'll come back.

Where you treat each other... well, like family.

Camp Sunshine is a special place where families find joy.

Where families find hope. **Where families find family.**



campsunshine.org